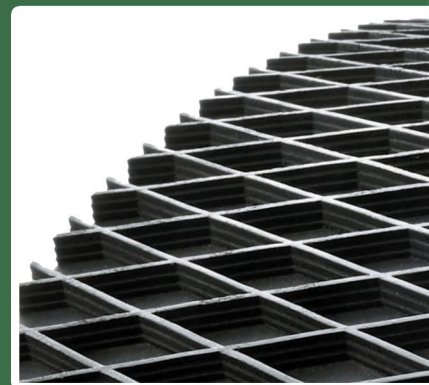
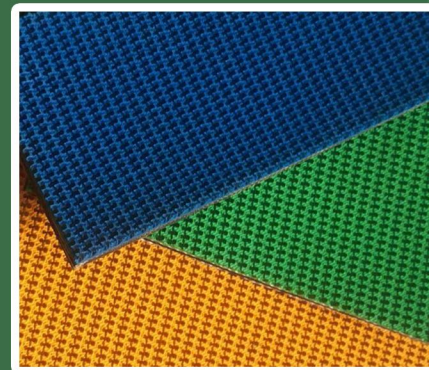




Agricultural Conveyor Belt



PCB
Pro Conveyor Belt

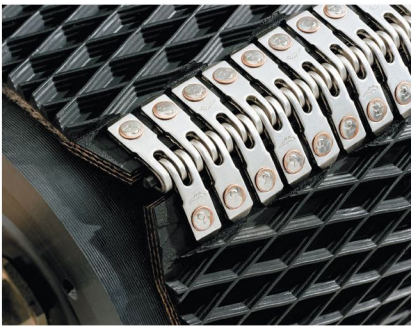


Agricultural Conveyor Belt

The new generation of PCB agricultural belting is engineered with the special designed rubber compound and carcass. The rubber compound has good adhesion, abrasion resistant and durability in the outdoor environment. The unique designed construction and special production process of carcass gives the belt excellent longitudinal flexibility, transverse stiffness, superior fastener retention, outstanding puncture and tear resistant.

Specification and Technician Data Sheet

Diamond Top Baler Belt



3 Ply Diamond Top Baler Belt

OAG	8.6mm
Compound	SBR/NR
Fabric	Synthetic
Temperature Range	-5-100°C
Tension	500KN/m

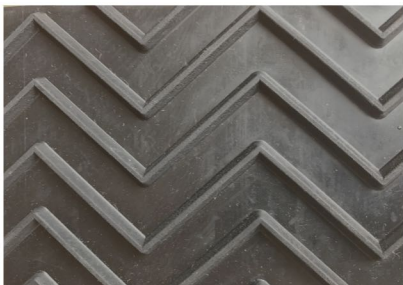
Rough top Conveyor Belt



3 Ply Rough Top Conveyor Belt

OAG	6.3mm
Compound	SBR/NR
Fabric	Synthetic
Temperature Range	-5-100°C
Tension	500KN/m

Continuous V Conveyor Belt



3 Ply Continuous V Conveyor Belt

OAG	7.6mm
Compound	SBR/NR
Fabric	Synthetic
Temperature Range	-5-100°C
Tension	500KN/m



PCB(Pro Conveyor Belt) conveyor belts for all kind of applications – up to the strongest and heaviest belts ever built. Please contact us for any assistance regarding your conveyor belt requirements.

PCB (Pro Conveyor Belt) has the most modern testing centre worldwide for developing conveyor belts. Extensive quality tests ensure the technological lead of PCB conveyor belts.

PCB production locations meet the ISO 9001 quality standard. The certification according to ISO 9001 comprises quality assurance during development, production, assembly and distribution. It therefore completely covers all of the areas which lead to higher standards of products and services. PCB fabricates according to all the nationally relevant quality standards like DIN, SANS, MSHA, RMA, BS, AS, CSA, etc.

Pro Conveyor Belt Co., Ltd
Office Address: Shenzhen Road, Qingdao City, Shandong
Province, China
Factory Address: HUtouai Town, Laizhou city, Shandong
Province, China
Phone: 0086-532-80999210
E-mail: pcb@pro-cb.com
Web: <http://www.pro-cb.com>

The content of this brochure has been compiled to the best of our knowledge. All details are not binding, even with regard to possible third party industrial rights. We reserve ourselves the right to make technical modifications due to further developments, at any time. No liability is accepted for the recommendations and details given in this brochure. © Pro Conveyor Belt Co., Ltd
All rights reserved.

PCB
Pro Conveyor Belt